



# C&D TRUE FRONT ACCESS®

## TEL Series Float Service



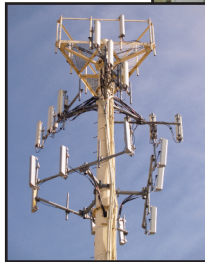
TEL12-105FNS standard  
TEL12-105FNSG with optional gas collection (shown)

### **BENEFITS:**

- Long Life Float Service Design
  - Confirmed via 3rd party Certification
  - Premium alloy and material components
- True Front Access Design
  - Optional True Front Access gas collection system (models contain "G" suffix)
  - True direct connect terminal for reliability
  - C&D Ohmic Ring® for accurate testing
  - Connection versatility
- Maximum Performance
  - Superior output due to direct terminal connection
  - Low internal resistance
- Compliant to major global specifications
  - British Standard BS 6290: Part 4: 1997
  - IEC 60896-21/22
  - Telcordia SR-4228
  - Eurobat Guide Classification: Long Life
  - Bellcore GR-63-CORE & GR-1089-CORE
  - UL94 V-0FR and Venting Operation
  - Non-Hazardous, not restricted for any transportation mode (air, water or land)



Typical Wireline Application



Typical Wireless Application

### **SPECIFICATIONS**

Battery	Voltage Per Unit	Ampere Hour Capacity 8 Hour Rate @ 77°F (25°C) to 1.75 v/c	Ampere Hour Capacity 10 Hour Rate @ 68°F (20°C) to 1.80 v/c	Maximum Discharge Current	Short Circuit Current	Ohms Impedance 60 Hz (Ω)	Battery Weight
TEL12-105FNS/FNSG	12 V	104 Ah	99 Ah	800 Amperes	4000 Amperes	0.0030 Ohms	71 lbs/32 kg

## SPECIFICATIONS

Ampere Hour Capacity to 1.75 Volts per Cell @77°F (25°C)

Discharge in Hours

Model	1	2	3	4	5	6	7	8	10	12	20	24
TEL12-105FNS/FNSG	73	83	89	94	97	100	102	104	106	108	116	118

You may also access the product ratings by logging onto the C&D Battery Sizing program at [www.cdstandbypower.net](http://www.cdstandbypower.net)

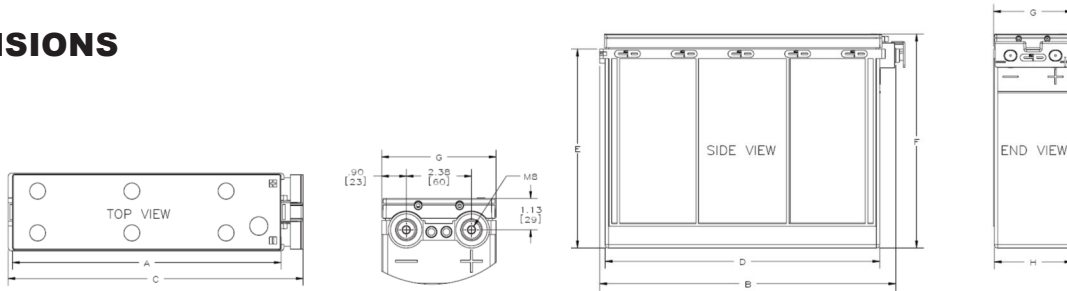
Ampere Hour Capacity to 1.80 Volts per Cell @68°F (20°C)

Discharge in Hours

Model	1	2	3	4	5	6	7	8	10	12	20	24
TEL12-105FNS/FNSG	68	77	82	87	90	93	94	96	99	100	106	107

You may also access the product ratings by logging onto the C&D Battery Sizing program at [www.cdstandbypower.net](http://www.cdstandbypower.net)

## DIMENSIONS



MODEL	A		B		C		D		E		F		G		H	
	in	mm	in	mm	in	mm	in	mm	in	mm	in	mm	in	mm	in	mm
TEL12-105FNS	14.5	370	15.6	397	16.1	410	14.4	365	10.4	265	11.2	284	4.1	106	4.0	103
TEL12-105FNSG	14.5	370	15.6	397	16.1	410	14.4	365	10.4	265	11.3	287	4.1	106	4.0	103

\* All dimensions in inches and (millimeters). All dimensions are for reference only. Contact a C&D Representative for complete dimensions information.

<b>Operating Temperature Range with temperature compensation</b>	Discharge: -40°F (-40°C) to +160°F (71°C) Charge: -10°F (-23°C) to +140°F (60°C)						
<b>Nominal Operating Temperature Range</b>	+68°F (20°C) to +80°F (27°C)						
<b>Recommended Maximum Charging Current Limit</b>	C <sub>20</sub> /5 Amperes (23A)						
<b>Float Charging Voltage</b>	13.5 to 13.8 VDC average per 12V unit						
<b>Maximum AC Ripple (Charger)</b>	0.5% RMS or 1.5% P-P of float charge voltage recommended for best results. Max voltage allowed = 1.4% RMS (4% P-P) Max current allowed = C <sub>20</sub> /20						
<b>Self Discharge</b>	Battery can be stored up to 6 months at 77°F (25°C) before a freshening charge is required. Batteries stored at temperatures greater than 77°F (25°C) will require recharge sooner than batteries stored at lower temperatures. See C&D bulletin 41-7272, Self-Discharge and Inventory Control for details.						
<b>Equalize charge and cycle service voltage</b>	14.40 to 14.80 VDC average per 12V unit @ 77°F (25°C)						
<b>Terminal: Inserted - Inter-unit connector provided</b>	Threaded copper alloy insert terminal to accept M8 bolt						
<b>Terminal Hardware Torque</b>	160 in.-lbs. (18 N-m)						
<b>Telcordia Part Numbers</b>	<table border="0"> <tr> <td><b>Battery Part Number</b></td> <td><b>CLEI Code</b></td> <td><b>CPR</b></td> </tr> <tr> <td>TEL12-105FNS/FNSG</td> <td>PBMYAE9KRA</td> <td>215192</td> </tr> </table>	<b>Battery Part Number</b>	<b>CLEI Code</b>	<b>CPR</b>	TEL12-105FNS/FNSG	PBMYAE9KRA	215192
<b>Battery Part Number</b>	<b>CLEI Code</b>	<b>CPR</b>					
TEL12-105FNS/FNSG	PBMYAE9KRA	215192					

## C&D TECHNOLOGIES, INC.

1400 Union Meeting Road  
P.O. Box 3053 • Blue Bell, PA 19422-0858  
(215) 619-2700 • Fax (215) 619-7899 • (800) 543-8630  
customersvc@cdtechno.com  
www.cdtechno.com

Dynasty House Premier Way  
Abbey Park Industrial Estate  
Hampshire Romsey SO51 9AQ  
United Kingdom  
+44 (1794) 518173

Any data, descriptions or specifications presented herein are subject to revision by C&D Technologies, Inc. without notice. While such information is believed to be accurate as indicated herein, C&D Technologies, Inc. makes no warranty and hereby disclaims all warranties, express or implied, with regard to the accuracy or completeness of such information. Further, because the product(s) featured herein may be used under conditions beyond its control, C&D Technologies, Inc. hereby disclaims all warranties, either express or implied, concerning the fitness or suitability of such product(s) for any particular use or in any specific application or arising from any course of dealing or usage of trade. The user is solely responsible for determining the suitability of the product(s) featured herein for user's intended purpose and in user's specific application.

Copyright 2013 C&D TECHNOLOGIES, INC. Printed in U.S.A. 12-1060 0813/CD